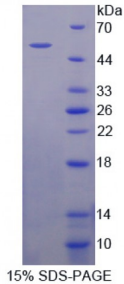


Abbexa Ltd, Innovation Centre, Cambridge Science Park, Cambridge, CB4 0EY, UK
Telephone: +44 (0) 1223 755950 - Fax: +44 (0) 1223 755951 - E-Mail: info@abbexa.com

Human Protein Kinase, AMP Activated Beta 1 (PRKAb1) Protein

Catalogue No.: abx166257



SDS-PAGE analysis of Kinase, AMP Activated beta 1 Protein.

Kinase, AMP Activated Beta 1 Protein (Recombinant) is a protein produced in Human.

Target: Protein Kinase, AMP Activated Beta 1 (PRKAb1)

Origin: Human

Tested Applications: ELISA, WB, IP, SDS-PAGE

Purity: > 92%

Form: Lyophilized

Conjugation: Unconjugated

Storage: Store at 2-8 °C for up to one month. Store at -80 °C for up to one year. Avoid repeated freeze/thaw cycles.

Expression: Recombinant

Molecular Weight: 56kDa

Sequence Fragment: Arg13-Leu242

Tag: N-terminal His-tag, GST-tag, S-tag

Activity: Not tested

Concentration: Prior to lyophilization: 200 µg/ml

Buffer: Prior to lyophilization: PBS, pH 7.4, containing 0.01% Sarcosyl, 1 mM DTT, 5% Trehalose and Proclin-300.

Note: This product is for research use only.