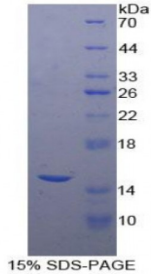


Abbexa Ltd, Innovation Centre, Cambridge Science Park, Cambridge, CB4 0EY, UK
Telephone: +44 (0) 1223 755950 - Fax: +44 (0) 1223 755951 - E-Mail: info@abbexa.com

Human Carcinoembryonic Antigen (CEA) Protein

Catalogue No.: abx166414



SDS-PAGE analysis of Carcinoembryonic Antigen Protein.

Carcinoembryonic Antigen Protein (Recombinant) is a protein produced in Human.

Target: Carcinoembryonic Antigen (CEA)

Origin: Human

Host: E. coli

Tested Applications: ELISA, WB, IP, SDS-PAGE

Purity: > 95%

Form: Lyophilized

Reconstitution: Reconstitute in sterile PBS, pH7.2-pH7.4.

Conjugation: Unconjugated

Storage: Store at 2-8 °C for up to one month. Store at -80 °C for up to one year. Avoid repeated freeze/thaw cycles.

Expression: Recombinant

Molecular Weight: 15.3 kDa

Sequence Fragment: Ser448-Gly572

Sequence: MGHHHHHSG SEF- SWL IDGNIQQHTQ ELFISNITEK NSGLYTCQAN NSASGHSRTT VKTITVSAEL
PKPSISSNNS KPVEDKDAVA FTCEPEAQNT TYLWWVNGQS LPVSPRLQLS NGNRRTLTFN
VTRNDARAYV CG

Tag: N-terminal His-tag

Abbexa Ltd, Innovation Centre, Cambridge Science Park, Cambridge, CB4 0EY, UK
Telephone: +44 (0) 1223 755950 - Fax: +44 (0) 1223 755951 - E-Mail: info@abbexa.com

Activity: Not tested

Endotoxin Level: < 1.0EU per 1 µg (determined by the LAL method).

Concentration: Prior to lyophilization: 200 µg/ml

Buffer: Prior to lyophilization: PBS, pH 7.4, containing 0.01% Sarcosyl, 1 mM DTT, 5% Trehalose and Proclin-300.

Note: This product is for research use only.