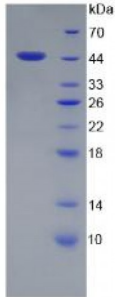


Abbexa Ltd, Innovation Centre, Cambridge Science Park, Cambridge, CB4 0EY, UK
Telephone: +44 (0) 1223 755950 - Fax: +44 (0) 1223 755951 - E-Mail: info@abbexa.com

Human Complement C3 Convertase Protein

Catalogue No.: abx166485



SDS-PAGE analysis of Complement C3 Convertase Protein.

Complement C3 Convertase Protein (Recombinant) is a protein produced in Human.

Target:	Complement C3 Convertase
Origin:	Human
Host:	E. coli
Tested Applications:	ELISA, WB, IP, SDS-PAGE
Purity:	> 92%
Form:	Lyophilized
Reconstitution:	Reconstitute in PBS (pH7.4) to a concentration of 0.1-1.0 mg/ml. Do not vortex.
Conjugation:	Unconjugated
Storage:	Store at 2-8 °C for up to one month. Store at -80 °C for up to one year. Avoid repeated freeze/thaw cycles.
Expression:	Recombinant
Molecular Weight:	44.9kDa (Predicted Molecular Mass), 46kDa (Accurate Molecular Mass as determined SDS-PAGE).
Sequence Fragment:	Glu1322-Cys1661

Abbexa Ltd, Innovation Centre, Cambridge Science Park, Cambridge, CB4 0EY, UK
Telephone: +44 (0) 1223 755950 - Fax: +44 (0) 1223 755951 - E-Mail: info@abbexa.com

- Sequence:** MHHHHHSSGLVPRGSGMKETAALKFERQHMDSPDLGTDDDDKAMADIGSEF-EETKENEGF
TVTAEGKGQG TLSVVTMYHA KAKDQLTCNK FDLKVTIKPA PETEKRPQDA KNTMILEICT
RYRGDQDATM SILDISMMTG FAPDTDDLKQ LANGVDYRIS KYELDKAFSD RNTLIYLDK VSHSEDDCLA
FKVHQYFNVE LIQPGAVKVY AYYNLEESCT RFYHPEKEDG KLNKLCRDEL CRCAEENCFI
QKSDDKVTLE ERLDKACEPG VDYYVKTRLV KVQLSNDFDE YIMAIEQTIK SGSDEVQVGQ QRTFISPIKC
REALKLEEK HYLmwGLSSD FWGEKPNLSY IIGKDTWVEH WPEEDECQDE ENQKQCQDLG
AFTESMVVFG C
- Tag:** Two N-terminal tags, His-tag and S-tag
- Activity:** Not tested
- Concentration:** Prior to lyophilization: 200 µg/ml
- Buffer:** Prior to lyophilization: PBS, pH 7.4, containing 0.01% Sarcosyl, 1 mM DTT, 5% Trehalose and Proclin-300.
- Note:** This product is for research use only.