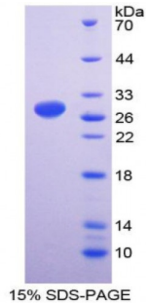


**Human Interferon Gamma Receptor 1 (IFN $\gamma$ R1) Protein**

Catalogue No.: abx166500



SDS-PAGE analysis of Interferon gamma Receptor 1 Protein.

Interferon Gamma Receptor 1 Protein (Recombinant) is a protein produced in Human.

**Target:** Interferon Gamma Receptor 1 (IFN $\gamma$ R1)**Origin:** Human**Tested Applications:** ELISA, WB, IP, SDS-PAGE**Purity:** > 95%**Form:** Lyophilized**Conjugation:** Unconjugated**Storage:** Store at 2-8 °C for up to one month. Store at -80 °C for up to one year. Avoid repeated freeze/thaw cycles.**Expression:** Recombinant**Molecular Weight:** 29kDa**Sequence Fragment:** Glu18-Gly245**Tag:** Two N-terminal tags, His-tag and T7-tag**Activity:** Not tested**Concentration:** Prior to lyophilization: 200  $\mu$ g/ml**Buffer:** Prior to lyophilization: PBS, pH 7.4, containing 0.01% Sarcosyl, 1 mM DTT, 5% Trehalose and Proclin-300.**Note:** This product is for research use only.