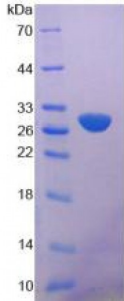


Human Phospholipase A2, Calcium Independent (iPLA2) Protein

Catalogue No.: abx166662



SDS-PAGE analysis of Phospholipase A2, Calcium Independent Protein.

Phospholipase A2, Calcium Independent Protein (Recombinant) is a protein produced in Human.

Target: Phospholipase A2, Calcium Independent (iPLA2)**Origin:** Human**Tested Applications:** ELISA, WB, IP, SDS-PAGE**Purity:** > 98%**Form:** Lyophilized**Conjugation:** Unconjugated**Storage:** Store at 2-8 °C for up to one month. Store at -80 °C for up to one year. Avoid repeated freeze/thaw cycles.**Expression:** Recombinant**Molecular Weight:** 29kDa**Sequence Fragment:** Arg484-Ile701**Tag:** Two N-terminal tags, His-tag and T7-tag**Activity:** Not tested**Concentration:** Prior to lyophilization: 200 µg/ml**Buffer:** Prior to lyophilization: 100 mM NaHCO₃, 500 mM NaCl, pH 8.3, containing 1 mM EDTA, 1 mM DTT, 0.01% Sarcosyl, 5% Trehalose and Proclin-300.**Note:** This product is for research use only.