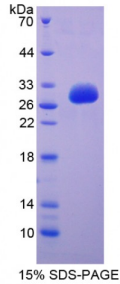


Human Immunoglobulin Superfamily, Member 2 (IGSF2) Protein

Catalogue No.: abx166678



SDS-PAGE analysis of Immunoglobulin Superfamily, Member 2 Protein.

Immunoglobulin Superfamily, Member 2 Protein (Recombinant) is a protein produced in Human.

Target: Immunoglobulin Superfamily, Member 2 (IGSF2)

Origin: Human

Tested Applications: ELISA, WB, IP, SDS-PAGE

Purity: > 90%

Form: Lyophilized

Conjugation: Unconjugated

Storage: Store at 2-8 °C for up to one month. Store at -80 °C for up to one year. Avoid repeated freeze/thaw cycles.

Expression: Recombinant

Molecular Weight: 29kDa

Sequence Fragment: Ala566-Leu784

Tag: Two N-terminal tags, His-tag and T7-tag

Activity: Not tested

Concentration: Prior to lyophilization: 200 µg/ml

Buffer: Prior to lyophilization: PBS, pH 7.4, containing 0.01% Sarcosyl, 1 mM DTT, 5% Trehalose and Proclin-300.

Note: This product is for research use only.