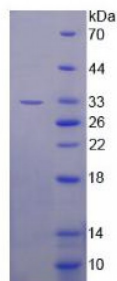


Abbexa Ltd, Innovation Centre, Cambridge Science Park, Cambridge, CB4 0EY, UK  
Telephone: +44 (0) 1223 755950 - Fax: +44 (0) 1223 755951 - E-Mail: [info@abbexa.com](mailto:info@abbexa.com)

## Human B-Cell CLL/Lymphoma 11A (Bcl11A) Protein

Catalogue No.: abx166747



SDS-PAGE analysis of B-Cell CLL/Lymphoma 11A Protein.

B-Cell CLL/Lymphoma 11A Protein (Recombinant) is a protein produced in Human.

**Target:** B-Cell CLL/Lymphoma 11A (Bcl11A)

**Origin:** Human

**Tested Applications:** ELISA, WB, IP, SDS-PAGE

**Purity:** > 95%

**Form:** Lyophilized

**Conjugation:** Unconjugated

**Storage:** Store at 2-8 °C for up to one month. Store at -80 °C for up to one year. Avoid repeated freeze/thaw cycles.

**Expression:** Recombinant

**Molecular Weight:** 32kDa

**Sequence Fragment:** Met1-Arg210

**Tag:** Two N-terminal tags, his-tag and T7 tag

**Activity:** Not tested

**Concentration:** Prior to lyophilization: 200 µg/ml

**Buffer:** Prior to lyophilization: 20 mM Tris, 150 mM NaCl, pH 8.0, containing 1 mM EDTA, 1 mM DTT, 0.01% Sarcosyl, 5% Trehalose and Proclin-300.

**Note:** This product is for research use only.