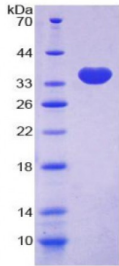


**Human Myosin Heavy Chain 10, Non Muscle (MYH10) Protein**

Catalogue No.: abx166842



SDS-PAGE analysis of Myosin Heavy Chain 10, Non Muscle Protein.

Myosin Heavy Chain 10, Non Muscle Protein (Recombinant) is a protein produced in Human.

**Target:** Myosin Heavy Chain 10, Non Muscle (MYH10)**Origin:** Human**Tested Applications:** ELISA, WB, IP, SDS-PAGE**Purity:** > 95%**Form:** Lyophilized**Conjugation:** Unconjugated**Storage:** Store at 2-8 °C for up to one month. Store at -80 °C for up to one year. Avoid repeated freeze/thaw cycles.**Expression:** Recombinant**Molecular Weight:** 33kDa**Sequence Fragment:** Thr438-Lys716**Tag:** Two N-terminal tags, His-tag and T7-tag**Activity:** Not tested**Concentration:** Prior to lyophilization: 200 µg/ml**Buffer:** Prior to lyophilization: PBS, pH 7.4, containing 0.01% Sarcosyl, 1 mM DTT, 5% Trehalose and Proclin-300.**Note:** This product is for research use only.