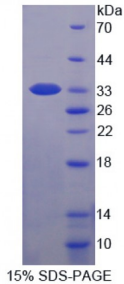


Human Myosin Light Chain Kinase 2 (MYLK2) Protein

Catalogue No.: abx166940



SDS-PAGE analysis of Myosin Light Chain Kinase 2 Protein.

15% SDS-PAGE

Myosin Light Chain Kinase 2 Protein (Recombinant) is a protein produced in Human.

Target: Myosin Light Chain Kinase 2 (MYLK2)

Origin: Human

Tested Applications: ELISA, WB, IP, SDS-PAGE

Purity: > 95%

Form: Lyophilized

Conjugation: Unconjugated

Storage: Store at 2-8 °C for up to one month. Store at -80 °C for up to one year. Avoid repeated freeze/thaw cycles.

Expression: Recombinant

Molecular Weight: 33kDa

Sequence Fragment: Ala313-Lys562

Tag: Two N-terminal tags, his-tag and T7 tag

Activity: Not tested

Concentration: Prior to lyophilization: 200 µg/ml

Buffer: Prior to lyophilization: PBS, pH 7.4, containing 0.01% Sarcosyl, 1 mM DTT, 5% Trehalose and Proclin-300.

Note: This product is for research use only.