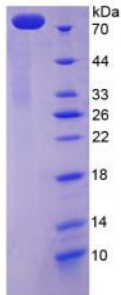


Abbexa Ltd, Innovation Centre, Cambridge Science Park, Cambridge, CB4 0EY, UK
Telephone: +44 (0) 1223 755950 - Fax: +44 (0) 1223 755951 - E-Mail: info@abbexa.com

Human ATPase, Ca⁺⁺ Transporting, Cardiac Muscle, Slow Twitch 2 (ATP2A2) Protein

Catalogue No.: abx167004



SDS-PAGE analysis of ATPase, Ca⁺⁺ TransPorting, Cardiac Muscle, Slow Twitch 2 Protein.

ATPase, Ca⁺⁺ TransPorting, Cardiac Muscle, Slow Twitch 2 Protein (Recombinant) is a protein produced in Human.

- Target:** ATPase, Ca⁺⁺ Transporting, Cardiac Muscle, Slow Twitch 2 (ATP2A2)
- Origin:** Human
- Tested Applications:** ELISA, WB, IP, SDS-PAGE
- Purity:** > 92%
- Form:** Lyophilized
- Conjugation:** Unconjugated
- Storage:** Store at 2-8 °C for up to one month. Store at -80 °C for up to one year. Avoid repeated freeze/thaw cycles.
- Expression:** Recombinant
- Molecular Weight:** 78kDa
- Sequence Fragment:** Ile315-Met756
- Tag:** Two N-terminal tags, His-tag and GST-tag
- Activity:** Not tested
- Concentration:** Prior to lyophilization: 200 µg/ml
- Buffer:** Prior to lyophilization: 100 mM NaHCO₃, 500 mM NaCl, pH 8.3, containing 1 mM EDTA, 1 mM DTT, 0.01% Sarcosyl, 5% Trehalose and Proclin-300.

Note: This product is for research use only.