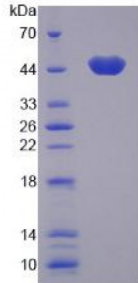


Human Mammary Serine Protease Inhibitor (Maspin) Protein

Catalogue No.: abx167006



SDS-PAGE analysis of Mammary Serine Protease Inhibitor Protein.

Mammary Serine Protease Inhibitor Protein (Recombinant) is a protein produced in Human.

Target:	Mammary Serine Protease Inhibitor (Maspin)
Origin:	Human
Tested Applications:	ELISA, WB, IP, SDS-PAGE
Purity:	> 98%
Form:	Lyophilized
Conjugation:	Unconjugated
Storage:	Store at 2-8 °C for up to one month. Store at -80 °C for up to one year. Avoid repeated freeze/thaw cycles.
Expression:	Recombinant
Molecular Weight:	46kDa
Sequence Fragment:	Met1-Pro375
Tag:	N-terminal His-tag
Activity:	Not tested
Concentration:	Prior to lyophilization: 200 µg/ml
Buffer:	Prior to lyophilization: 20 mM Tris, 150 mM NaCl, pH 8.0, containing 1 mM EDTA, 1 mM DTT, 0.01% Sarcosyl, 5% Trehalose and Proclin-300.
Note:	This product is for research use only.