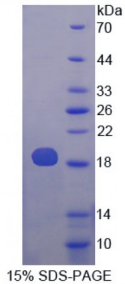


Abbexa Ltd, Innovation Centre, Cambridge Science Park, Cambridge, CB4 0EY, UK
Telephone: +44 (0) 1223 755950 - Fax: +44 (0) 1223 755951 - E-Mail: info@abbexa.com

Human Phospholipase A2, Group X (PLA2G10) Protein

Catalogue No.: abx167064



SDS-PAGE analysis of Phospholipase A2, Group X Protein.

Phospholipase A2, Group X Protein (Recombinant) is a protein produced in Human.

Target:	Phospholipase A2, Group X (PLA2G10)
Origin:	Human
Tested Applications:	ELISA, WB, IP, SDS-PAGE
Purity:	> 95%
Form:	Lyophilized
Conjugation:	Unconjugated
Storage:	Store at 2-8 °C for up to one month. Store at -80 °C for up to one year. Avoid repeated freeze/thaw cycles.
Expression:	Recombinant
Molecular Weight:	19kDa
Sequence Fragment:	Glu32-Asp165
Tag:	Two N-terminal tags, his-tag and T7 tag
Activity:	Not tested
Concentration:	Prior to lyophilization: 200 µg/ml
Buffer:	Prior to lyophilization: PBS, pH 7.4, containing 0.01% Sarcosyl, 1 mM DTT, 5% Trehalose and Proclin-300.
Note:	This product is for research use only.