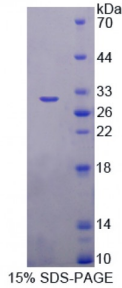


Human Toll Like Receptor Adaptor Molecule 1 (TICAM1) Protein

Catalogue No.: abx167094



SDS-PAGE analysis of Toll Like Receptor Adaptor Molecule 1 Protein.

Toll Like Receptor Adaptor Molecule 1 Protein (Recombinant) is a protein produced in Human.

Target: Toll Like Receptor Adaptor Molecule 1 (TICAM1)

Origin: Human

Tested Applications: ELISA, WB, IP, SDS-PAGE

Purity: > 95%

Form: Lyophilized

Conjugation: Unconjugated

Storage: Store at 2-8 °C for up to one month. Store at -80 °C for up to one year. Avoid repeated freeze/thaw cycles.

Expression: Recombinant

Molecular Weight: 30kDa

Sequence Fragment: Met1-Asp136

Tag: N-terminal His-tag, T7 tag

Activity: Not tested

Concentration: Prior to lyophilization: 200 µg/ml

Buffer: Prior to lyophilization: PBS, pH 7.4, containing 0.01% Sarcosyl, 1 mM DTT, 5% Trehalose and Proclin-300.

Note: This product is for research use only.