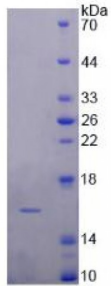


Abbexa Ltd, Innovation Centre, Cambridge Science Park, Cambridge, CB4 0EY, UK
Telephone: +44 (0) 1223 755950 - Fax: +44 (0) 1223 755951 - E-Mail: info@abbexa.com

Human Dopamine Receptor D1 (DRD1) Protein

Catalogue No.: abx167155



SDS-PAGE analysis of Dopamine Receptor D1 Protein.

Dopamine Receptor D1 Protein (Recombinant) is a protein produced in Human.

Target: Dopamine Receptor D1 (DRD1)

Origin: Human

Tested Applications: ELISA, WB, IP, SDS-PAGE

Purity: > 98%

Form: Lyophilized

Conjugation: Unconjugated

Storage: Store at 2-8 °C for up to one month. Store at -80 °C for up to one year. Avoid repeated freeze/thaw cycles.

Expression: Recombinant

Molecular Weight: 16kDa

Sequence Fragment: Met23-Ser102

Tag: N-terminal His-tag, T7 tag

Activity: Not tested

Concentration: Prior to lyophilization: 200 µg/ml

Buffer: Prior to lyophilization: 100 mM NaHCO₃, 500 mM NaCl, pH 8.3, containing 1 mM EDTA, 1 mM DTT, 0.01% Sarcosyl, 5% Trehalose and Proclin-300.

Note: This product is for research use only.