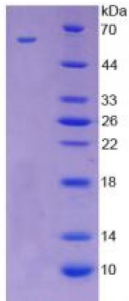


Mouse Immune Receptor Expressed On Myeloid Cells 1 (IREM1) Protein

Catalogue No.: abx167209



SDS-PAGE analysis of Immune Receptor Expressed On Myeloid Cells 1 Protein.

Immune Receptor Expressed On Myeloid Cells 1 Protein (Recombinant) is a protein produced in Mouse.

Target:	Immune Receptor Expressed On Myeloid Cells 1 (IREM1)
Origin:	Mouse
Tested Applications:	ELISA, WB, IP, SDS-PAGE
Purity:	> 95%
Form:	Lyophilized
Conjugation:	Unconjugated
Storage:	Store at 2-8 °C for up to one month. Store at -80 °C for up to one year. Avoid repeated freeze/thaw cycles.
Expression:	Recombinant
Molecular Weight:	59kDa
Sequence Fragment:	Ser45-Ile310
Tag:	Two N-terminal tags, His-tag and GST-tag
Activity:	Not tested
Concentration:	Prior to lyophilization: 200 µg/ml
Buffer:	Prior to lyophilization: 20 mM Tris, 150 mM NaCl, pH 8.0, containing 1 mM EDTA, 1 mM DTT, 0.01% Sarcosyl, 5% Trehalose and Proclin-300.

Note: This product is for research use only.