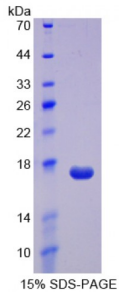


Rat Regenerating Islet Derived Protein 3 Alpha (REG3a) Protein

Catalogue No.: abx167938



SDS-PAGE analysis of REG3A Protein.

Regenerating Islet Derived Protein 3 Alpha (Recombinant) is a Protein produced in Rat.

Target: Regenerating Islet Derived Protein 3 Alpha (REG3a)**Origin:** Rat**Tested Applications:** ELISA, WB, IP, SDS-PAGE**Purity:** > 99%**Form:** Lyophilized**Conjugation:** Unconjugated**Storage:** Store at 2-8 °C for up to one month. Store at -80 °C for up to one year. Avoid repeated freeze/thaw cycles.**Expression:** Recombinant**Molecular Weight:** 17kDa**Sequence Fragment:** Gly25-Arg142**Tag:** Two N-terminal tags, His-tag and T7-tag**Activity:** Not tested**Concentration:** Prior to lyophilization: 200 µg/ml**Buffer:** Prior to lyophilization: PBS, pH 7.4, containing 0.01% Sarcosyl, 1 mM DTT, 5% Trehalose and Proclin-300.**Note:** This product is for research use only.