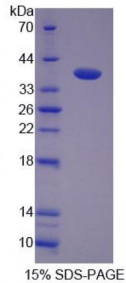


Abbexa Ltd, Innovation Centre, Cambridge Science Park, Cambridge, CB4 0EY, UK
Telephone: +44 (0) 1223 755950 - Fax: +44 (0) 1223 755951 - E-Mail: info@abbexa.com

Human Calcium/Calmodulin Dependent Protein Kinase II Beta (CAMK2b) Protein

Catalogue No.: abx167940



SDS-PAGE analysis of Calcium/Calmodulin Dependent Protein Kinase II beta Protein.

Calcium/Calmodulin Dependent Protein Kinase II Beta (Recombinant) is a protein produced in Human.

Target:	Calcium/Calmodulin Dependent Protein Kinase II Beta (CAMK2b)
Origin:	Human
Tested Applications:	ELISA, WB, IP, SDS-PAGE
Purity:	> 80%
Form:	Lyophilized
Conjugation:	Unconjugated
Storage:	Store at 2-8 °C for up to one month. Store at -80 °C for up to one year. Avoid repeated freeze/thaw cycles.
Expression:	Recombinant
Molecular Weight:	38kDa
Sequence Fragment:	Met1-Lys301
Tag:	Two N-terminal tags, His-tag and S-tag
Activity:	Not tested
Concentration:	Prior to lyophilization: 200 µg/ml
Buffer:	Prior to lyophilization: PBS, pH 7.4, containing 0.01% Sarcosyl, 1 mM DTT, 5% Trehalose and Proclin-300.

Note: This product is for research use only.