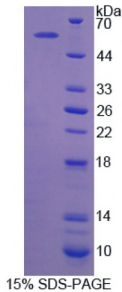


Rat Calcium/Calmodulin Dependent Protein Kinase II Alpha (CAMK2a) Protein

Catalogue No.: abx167942



SDS-PAGE analysis of Calcium/Calmodulin Dependent Protein Kinase II alpha Protein.

Calcium/Calmodulin Dependent Protein Kinase II Alpha (Recombinant) is a protein produced in Rat.

Target: Calcium/Calmodulin Dependent Protein Kinase II Alpha (CAMK2a)

Origin: Rat

Tested Applications: ELISA, WB, IP, SDS-PAGE

Purity: > 90%

Form: Lyophilized

Conjugation: Unconjugated

Storage: Store at 2-8 °C for up to one month. Store at -80 °C for up to one year. Avoid repeated freeze/thaw cycles.

Expression: Recombinant

Molecular Weight: 58kDa

Sequence Fragment: Val211-Ser332

Tag: N-terminal His-tag

Activity: Not tested

Concentration: Prior to lyophilization: 200 µg/ml

Buffer: Prior to lyophilization: PBS, pH 7.4, containing 0.01% Sarcosyl, 1 mM DTT, 5% Trehalose and Proclin-300.

Note: This product is for research use only.