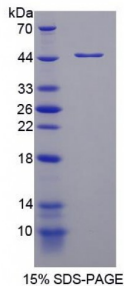


Human Glycosylphosphatidylinositol Anchored Molecule Like Protein (GML) Protein

Catalogue No.: abx167978



SDS-PAGE analysis of Glycosylphosphatidylinositol Anchored Molecule Like Protein.

Glycosylphosphatidylinositol Anchored Molecule Like Protein (Recombinant) is a protein produced in Human.

Target:	Glycosylphosphatidylinositol Anchored Molecule Like Protein (GML)
Origin:	Human
Tested Applications:	ELISA, WB, IP, SDS-PAGE
Purity:	> 93%
Form:	Lyophilized
Conjugation:	Unconjugated
Storage:	Store at 2-8 °C for up to one month. Store at -80 °C for up to one year. Avoid repeated freeze/thaw cycles.
Expression:	Recombinant
Molecular Weight:	46kDa
Sequence Fragment:	Met21-Pro158
Tag:	Two N-terminal tags, His-tag and GST-tag
Activity:	Not tested
Concentration:	Prior to lyophilization: 200 µg/ml
Buffer:	Prior to lyophilization: PBS, pH 7.4, containing 0.01% Sarcosyl, 1 mM DTT, 5% Trehalose and Proclin-300.

Note: This product is for research use only.