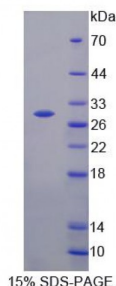


Abbexa Ltd, Innovation Centre, Cambridge Science Park, Cambridge, CB4 0EY, UK  
Telephone: +44 (0) 1223 755950 - Fax: +44 (0) 1223 755951 - E-Mail: info@abbexa.com

## Cow Lectin Like Oxidized Low Density Lipoprotein Receptor 1 (LOX1) Protein

Catalogue No.: abx168011



SDS-PAGE analysis of LOX1 Protein.

LOX1 Protein (Recombinant) is a protein produced in Cow.

**Target:** Lectin Like Oxidized Low Density Lipoprotein Receptor 1 (LOX1)

**Origin:** Cow

**Tested Applications:** ELISA, WB, IP, SDS-PAGE

**Purity:** > 92%

**Form:** Lyophilized

**Conjugation:** Unconjugated

**Storage:** Store at 2-8 °C for up to one month. Store at -80 °C for up to one year. Avoid repeated freeze/thaw cycles.

**Expression:** Recombinant

**Molecular Weight:** 29kDa

**Sequence Fragment:** Ser57-Gln270

**Tag:** Two N-terminal tags, His-tag and S-tag

**Activity:** Not tested

**Concentration:** Prior to lyophilization: 200 µg/ml

**Buffer:** Prior to lyophilization: PBS, pH 7.4, containing 0.01% Sarcosyl, 1 mM DTT, 5% Trehalose and Proclin-300.

**Note:** This product is for research use only.