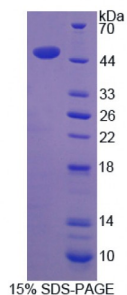


Abbexa Ltd, Innovation Centre, Cambridge Science Park, Cambridge, CB4 0EY, UK
Telephone: +44 (0) 1223 755950 - Fax: +44 (0) 1223 755951 - E-Mail: info@abbexa.com

Human Sclerostin (SOST) Protein

Catalogue No.: abx168077



SDS-PAGE analysis of Sclerostin Protein.

Sclerostin Protein (Recombinant) is a protein produced in Human.

Target: Sclerostin (SOST)

Origin: Human

Host: E. coli

Tested Applications: WB, SDS-PAGE

Purity: > 90%

Form: Lyophilized

Reconstitution: Reconstitute in 100mM NaHCO₃, 500mM NaCl (pH8.3) to a concentration of 0.1 - 1.0 mg/ml. Do not vortex.

Conjugation: Unconjugated

Storage: Store at 2-8 °C for up to one month. Store at -80 °C for up to one year. Avoid repeated freeze/thaw cycles.

Expression: Recombinant

Molecular Weight: 51.4 kDa (Predicted Molecular Mass), 51 kDa (Accurate Molecular Mass)

Sequence Fragment: Gly25-Tyr213

Tag: N-terminal His and GST-tag

Activity: Not tested

Concentration: Prior to lyophilization: 200 µg/ml

Abbexa Ltd, Innovation Centre, Cambridge Science Park, Cambridge, CB4 0EY, UK
Telephone: +44 (0) 1223 755950 - Fax: +44 (0) 1223 755951 - E-Mail: info@abbexa.com

Buffer: Prior to lyophilization: 100mMNaHCO₃, 500mMNaCl, pH8.3, containing 0.01% Sarcosyl, 5% Trehalose.

Note: This product is for research use only.