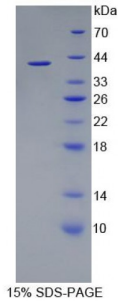


Human Phosphodiesterase 1A, Calmodulin Dependent (PDE1A) Protein

Catalogue No.: abx168114



SDS-PAGE analysis of Phosphodiesterase 1A, Calmodulin Dependent Protein.

Phosphodiesterase 1A, Calmodulin Dependent Protein (Recombinant) is a protein produced in Human.

Target: Phosphodiesterase 1A, Calmodulin Dependent (PDE1A)**Origin:** Human**Tested Applications:** ELISA, WB, IP, SDS-PAGE**Purity:** > 98%**Form:** Lyophilized**Conjugation:** Unconjugated**Storage:** Store at 2-8 °C for up to one month. Store at -80 °C for up to one year. Avoid repeated freeze/thaw cycles.**Expression:** Recombinant**Molecular Weight:** 40kDa**Sequence Fragment:** Gly2-Asp318**Tag:** Two N-terminal tags, His-tag and T7-tag**Activity:** Not tested**Concentration:** Prior to lyophilization: 200 µg/ml**Buffer:** Prior to lyophilization: PBS, pH 7.4, containing 0.01% Sarcosyl, 1 mM DTT, 5% Trehalose and Proclin-300.**Note:** This product is for research use only.