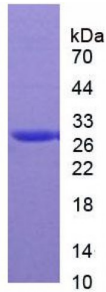


Abbexa Ltd, Innovation Centre, Cambridge Science Park, Cambridge, CB4 0EY, UK
Telephone: +44 (0) 1223 755950 - Fax: +44 (0) 1223 755951 - E-Mail: info@abbexa.com

Rat Carbonic Anhydrase II (CA2) Protein

Catalogue No.: abx168608



SDS-PAGE analysis of Carbonic Anhydrase II Protein.

Carbonic Anhydrase II Protein (Native) is a protein produced in Rat.

Target: Carbonic Anhydrase II (CA2)

Origin: Rat

Host: Rat

Tested Applications: WB, SDS-PAGE

Purity: > 90%

Form: Lyophilized

Conjugation: Unconjugated

Storage: Store at 2-8 °C for up to one month. Store at -80 °C for up to one year. Avoid repeated freeze/thaw cycles.

Expression: Native

Molecular Weight: 30.0 kDa (Predicted Molecular Mass), 30.0 kDa (Accurate Molecular Mass)

Swiss Prot: [P27139](#)

Sequence Fragment: Full length.

Activity: Not tested

Concentration: Prior to lyophilization: 200 µg/ml

Buffer: Prior to lyophilization: PBS, pH 7.4, containing 0.01% Sarcosyl, 1 mM DTT, 5% Trehalose and Proclin-300.

Note: This product is for research use only.