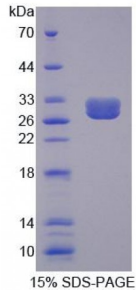


## Mouse Breakpoint Cluster Region (BCR) Protein

Catalogue No.: abx168905



SDS-PAGE analysis of Mouse BCR Protein.

Mouse BCR Protein (Recombinant) is a recombinant protein from Mouse. It is produced in *E. coli* using Prokaryotic expression.

**Target:** Breakpoint Cluster Region (BCR)

**Origin:** Mouse

**Host:** *E. coli*

**Tested Applications:** ELISA, WB, IP, SDS-PAGE

**Purity:** > 95%

**Form:** Lyophilized

**Conjugation:** Unconjugated

**Storage:** Store at 2-8 °C for up to one month. Store at -80 °C for up to one year. Avoid repeated freeze/thaw cycles.

**Expression:** Recombinant

**Molecular Weight:** 29.2 kDa

**Swiss Prot:** [Q6PAJ1](#)

**Sequence Fragment:** Met1042-Thr1268

**Activity:** Not tested

**Concentration:** Prior to lyophilization: 200 µg/ml

**Buffer:** Prior to lyophilization: PBS, pH 7.4, containing 0.01% Sarcosyl, 1 mM DTT, 5% Trehalose and Proclin-300.

**Note:** This product is for research use only.