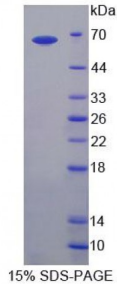


Human Calcineurin Binding Protein 1 (CABIN1) Protein

Catalogue No.: abx168912



SDS-PAGE analysis of Human CABIN1 Protein.

Human CABIN1 Protein (Recombinant) is a recombinant protein from Human. It is produced in E. coli using Prokaryotic expression.

Target:	Calcineurin Binding Protein 1 (CABIN1)
Origin:	Human
Host:	E. coli
Tested Applications:	ELISA, WB, IP, SDS-PAGE
Purity:	> 90%
Form:	Lyophilized
Conjugation:	Unconjugated
Storage:	Store at 2-8 °C for up to one month. Store at -80 °C for up to one year. Avoid repeated freeze/thaw cycles.
Expression:	Recombinant
Molecular Weight:	60.6 kDa
Swiss Prot:	Q9Y6J0
Sequence Fragment:	Ser23-Glu288
Tag:	Two N-terminal tags, His-tag and GST-tag
Activity:	Not tested
Concentration:	Prior to lyophilization: 200 µg/ml

Abbexa Ltd, Innovation Centre, Cambridge Science Park, Cambridge, CB4 0EY, UK
Telephone: +44 (0) 1223 755950 - Fax: +44 (0) 1223 755951 - E-Mail: info@abbexa.com

Buffer: Prior to lyophilization: PBS, pH 7.4, containing 0.01% Sarcosyl, 1 mM DTT, 5% Trehalose and Proclin-300.

Note: This product is for research use only.