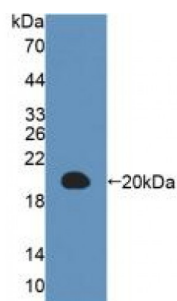


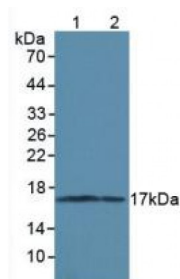
Abbexa Ltd, Innovation Centre, Cambridge Science Park, Cambridge, CB4 0EY, UK
Telephone: +44 (0) 1223 755950 - Fax: +44 (0) 1223 755951 - E-Mail: info@abbexa.com

Microtubule Associated Protein 1 Light Chain 3 Alpha (MAP1LC3a) Antibody

Catalogue No.: abx177562



Western blot analysis of recombinant Rat MAP1LC3a, using MAP1LC3a antibody.



Western blot analysis of (1) Rat Brain Tissue, and (2) Mouse Brain Tissue, using MAP1LC3a antibody.

Microtubule Associated Protein 1 Light Chain 3 Alpha (MAP1LC3a) Antibody is a Rabbit Polyclonal antibody against Microtubule Associated Protein 1 Light Chain 3 Alpha (MAP1LC3a).

Target: Microtubule Associated Protein 1 Light Chain 3 Alpha (MAP1LC3a)

Reactivity: Rat

Host: Rabbit

Clonality: Polyclonal

Tested Applications: WB, IHC, IF/ICC, IP

Recommended dilutions: WB: 0.5-2 µg/ml, IHC: 5-20 µg/ml, IF/ICC: 5-20 µg/ml. Optimal dilutions/concentrations should be determined by the end user.

Immunogen: [abx654370](#) - Recombinant MAP1LC3a (Met1-Gly120) expressed in E. coli

Purification: Purified by antigen-specific affinity chromatography followed by Protein A affinity chromatography.

Form: Liquid

Conjugation: Unconjugated

Abbexa Ltd, Innovation Centre, Cambridge Science Park, Cambridge, CB4 0EY, UK
Telephone: +44 (0) 1223 755950 - Fax: +44 (0) 1223 755951 - E-Mail: info@abbexa.com

- Storage:** Store at 4 °C for frequent use. Aliquot and store at -20 °C for up to one year. Avoid repeated freeze/thaw cycles.
- Buffer:** 0.01 M PBS, pH 7.4, containing 0.05% Proclin-300, 50% glycerol.
- Note:** This product is for research use only.