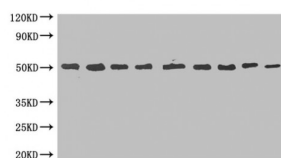


Abbexa Ltd, Innovation Centre, Cambridge Science Park, Cambridge, CB4 0EY, UK  
Telephone: +44 (0) 1223 755950 - Fax: +44 (0) 1223 755951 - E-Mail: [info@abbexa.com](mailto:info@abbexa.com)

## Myelin Basic Protein (MBP) Antibody

Catalogue No.: abx210094



MBP-tagged fusion protein (20 ng/ml) was subjected to SDS-PAGE followed by Western Blot with MBP Antibody at dilution of: Lane 1: 1000 Lane 2: 2000 Lane 3: 4000 Lane 4: 8000 Lane 5: 16000 Lane 6: 32000 Lane 7: 64000 Lane 8: 128000 Lane 9: 256000 Secondary: Goat polyclonal to Mouse IgG at 1/5000 dilution  
Predicted band size: 50 kDa  
Observed band size: 50 kDa

MBP Antibody is a Mouse Monoclonal against MBP.

<b>Target:</b>	MBP
<b>Host:</b>	Mouse
<b>Clonality:</b>	Monoclonal
<b>Tested Applications:</b>	ELISA, WB

**Recommended dilutions:** WB: 1/500 - 1/5000. Optimal dilutions/concentrations should be determined by the end user.

<b>Immunogen:</b>	MBP-Tag fusion protein
<b>Purity:</b>	> 95%
<b>Purification:</b>	Protein G Purified.
<b>Form:</b>	Liquid
<b>Isotype:</b>	IgG <sub>2a</sub>
<b>Conjugation:</b>	Unconjugated
<b>Storage:</b>	Aliquot and store at -20 °C. Avoid repeated freeze/thaw cycles.
<b>Buffer:</b>	0.01 M PBS, pH 7.4, 50% glycerol and 0.03% Proclin-300.
<b>Note:</b>	This product is for research use only.