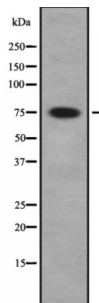


Abbexa Ltd, Innovation Centre, Cambridge Science Park, Cambridge, CB4 0EY, UK
Telephone: +44 (0) 1223 755950 - Fax: +44 (0) 1223 755951 - E-Mail: info@abbexa.com

PAK5 / 6 Antibody

Catalogue No.: abx217625



Western blot analysis of PAK5/6 using COLO whole cell lysates.

PAK5/6 Antibody is a Rabbit Polyclonal against PAK5/6.

Target: PAK5/6

Reactivity: Human

Host: Rabbit

Clonality: Polyclonal

Tested Applications: WB

Recommended dilutions: WB: 1/1000. Optimal dilutions/concentrations should be determined by the end user.

Immunogen: Synthesised peptide derived from human PAK5/6

Purification: Purified by affinity chromatography using epitope-specific peptide.

Form: Liquid

Conjugation: Unconjugated

Specificity: PAK5/6 Antibody detects endogenous levels of total PAK5/6

Storage: Aliquot and store at -20 °C. Avoid repeated freeze/thaw cycles.

Molecular Weight: 75 kDa

Swiss Prot: [Q9P286](#) [Q9NQ5](#)

GeneID: [57144](#) [106821730](#) [56924](#)

Abbexa Ltd, Innovation Centre, Cambridge Science Park, Cambridge, CB4 0EY, UK
Telephone: +44 (0) 1223 755950 - Fax: +44 (0) 1223 755951 - E-Mail: info@abbexa.com

Gene Symbol: PAK5

Ensembl: ENSG00000101349

Concentration: 1 mg/ml

Buffer: PBS, pH 7.4, 150 mM NaCl, 0.02% sodium azide and 50% glycerol.

Note: This product is for research use only.