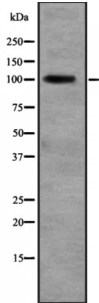


**Ral Guanine Nucleotide Dissociation Stimulator (RALGDS) Antibody**

Catalogue No.: abx218163



Western blot analysis of RALGDS expression in Liver (Human) Tissue Lysate. The lane on the left is treated with the antigen-specific peptide.

RALGDS Antibody is a Rabbit Polyclonal against RALGDS.

**Target:** RALGDS

**Reactivity:** Human, Mouse, Rat

**Host:** Rabbit

**Clonality:** Polyclonal

**Tested Applications:** WB

**Recommended dilutions:** WB: 1/500 - 1/2000. Optimal dilutions/concentrations should be determined by the end user.

**Immunogen:** Synthesised peptide derived from human RALGDS

**Purification:** Purified by affinity chromatography using epitope-specific peptide.

**Form:** Liquid

**Conjugation:** Unconjugated

**Specificity:** RALGDS antibody detects endogenous levels of total RALGDS

**Storage:** Aliquot and store at -20 °C. Avoid repeated freeze/thaw cycles.

**Molecular Weight:** 100 kDa

**Swiss Prot:** [Q12967](#)

**GeneID:** [5900](#)

Abbexa Ltd, Innovation Centre, Cambridge Science Park, Cambridge, CB4 0EY, UK  
Telephone: +44 (0) 1223 755950 - Fax: +44 (0) 1223 755951 - E-Mail: [info@abbexa.com](mailto:info@abbexa.com)

**Gene Symbol:** RALGDS

**Ensembl:** ENSG00000160271

**Concentration:** 1 mg/ml

**Buffer:** PBS, pH 7.4, 150 mM NaCl, 0.02% sodium azide and 50% glycerol.

**Note:** This product is for research use only.