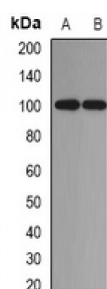


## ADAM Metallopeptidase Domain 9 (ADAM9) Antibody

Catalogue No.: abx225012



Immunofluorescent analysis of ADAM9 staining in U2OS cells. Formalin-fixed cells were permeabilized with 0.1% Triton X-100 in TBS for 5-10 minutes and blocked with 3% BSA-PBS for 30 minutes at room temperature. Cells were probed with the primary antibody in 3% BSA-PBS and incubated overnight at 4 °C in a humidified chamber. Cells were washed with PBST and incubated with a DyLight 594-conjugated secondary antibody (red) in PBS at room temperature in the dark.



Western blot analysis of ADAM9 expression in mouse kidney (A), mouse liver (B) whole cell lysates.

ADAM9 Antibody is a Rabbit Polyclonal against ADAM9.

**Target:** ADAM9

**Reactivity:** Human, Mouse, Rat

**Host:** Rabbit

**Clonality:** Polyclonal

**Tested Applications:** WB, IF/ICC

**Recommended dilutions:** WB: 1/500 - 1/2000, IF/ICC: 1/50 - 1/200. Optimal dilutions/concentrations should be determined by the end user.

**Immunogen:** Recombinant full length protein of human ADAM9.

**Purification:** The antibody was purified by immunogen affinity chromatography.

**Form:** Liquid

**Isotype:** IgG

**Specificity:** Recognizes endogenous levels of ADAM9 protein.

Abbexa Ltd, Innovation Centre, Cambridge Science Park, Cambridge, CB4 0EY, UK  
Telephone: +44 (0) 1223 755950 - Fax: +44 (0) 1223 755951 - E-Mail: [info@abbexa.com](mailto:info@abbexa.com)

**Storage:** Shipped at 4°C. Aliquot and store at -20°C for one year. Avoid freeze/thaw cycles.

**Swiss Prot:** [Q13443](#)

**GeneID:** [8754](#) [11502](#)

**Gene Symbol:** ADAM9

**Buffer:** 0.42% Potassium phosphate, 0.87% Sodium chloride, pH 7.3, 30% glycerol, and 0.01% sodium azide.

**Note:** This product is for research use only.