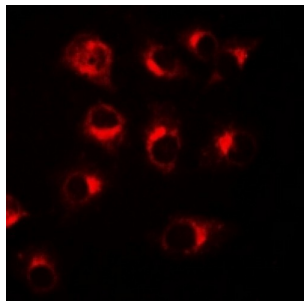


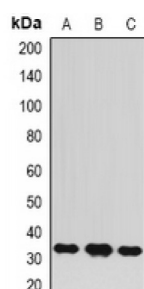
Abbexa Ltd, Innovation Centre, Cambridge Science Park, Cambridge, CB4 0EY, UK
Telephone: +44 (0) 1223 755950 - Fax: +44 (0) 1223 755951 - E-Mail: info@abbexa.com

B-Cell Lymphoma/leukemia 10 (BCL10) Antibody

Catalogue No.: abx225060



Immunofluorescent analysis of BCL10 staining in A549 cells. Formalin-fixed cells were permeabilized with 0.1% Triton X-100 in TBS for 5-10 minutes and blocked with 3% BSA-PBS for 30 minutes at room temperature. Cells were probed with the primary antibody in 3% BSA-PBS and incubated overnight at 4 °C in a humidified chamber. Cells were washed with PBST and incubated with a DyLight 594-conjugated secondary antibody (red) in PBS at room temperature in the dark.



Western blot analysis of BCL10 expression in MCF7 (A), A549 (B), Jurkat (C) whole cell lysates.

BCL10 Antibody is a Rabbit Polyclonal against BCL10.

Target: BCL10

Reactivity: Human, Mouse, Rat

Host: Rabbit

Clonality: Polyclonal

Tested Applications: WB, IF/ICC

Recommended dilutions: WB: 1/500 - 1/2000, IF/ICC: 1/50 - 1/200. Optimal dilutions/concentrations should be determined by the end user.

Immunogen: Recombinant full length protein of human BCL10.

Purification: The antibody was purified by immunogen affinity chromatography.

Form: Liquid

Isotype: IgG

Specificity: Recognizes endogenous levels of BCL10 protein.

Abbexa Ltd, Innovation Centre, Cambridge Science Park, Cambridge, CB4 0EY, UK
Telephone: +44 (0) 1223 755950 - Fax: +44 (0) 1223 755951 - E-Mail: info@abbexa.com

Storage:	Shipped at 4°C. Aliquot and store at -20°C for one year. Avoid freeze/thaw cycles.
Swiss Prot:	<u>O95999</u>
GeneID:	<u>8915</u> <u>12042</u> <u>83477</u>
Gene Symbol:	BCL10
Buffer:	0.42% Potassium phosphate, 0.87% Sodium chloride, pH 7.3, 30% glycerol, and 0.01% sodium azide.
Note:	This product is for research use only.