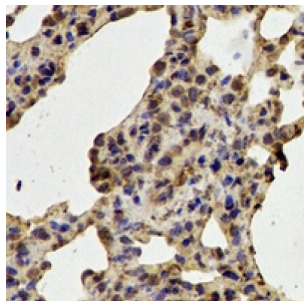


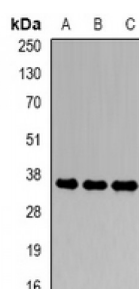
Abbexa Ltd, Innovation Centre, Cambridge Science Park, Cambridge, CB4 0EY, UK
Telephone: +44 (0) 1223 755950 - Fax: +44 (0) 1223 755951 - E-Mail: info@abbexa.com

Cyclin Dependent Kinase 6 (CDK6) Antibody

Catalogue No.: abx225099



Immunohistochemical analysis of CDK6 staining in rat lung formalin fixed paraffin embedded tissue section. The section was pre-treated using heat mediated antigen retrieval with sodium citrate buffer (pH 6.0). The section was then incubated with the antibody at room temperature and detected using an HRP conjugated compact polymer system. DAB was used as the chromogen. The section was then counterstained with haematoxylin and mounted with DPX.



Western blot analysis of CDK6 expression in SW620 (A), HeLa (B), Jurkat (C) whole cell lysates.

CDK6 Antibody is a Rabbit Polyclonal against CDK6.

Target: CDK6

Reactivity: Human, Mouse, Rat

Host: Rabbit

Clonality: Polyclonal

Tested Applications: WB, IHC

Recommended dilutions: WB: 1/500 - 1/2000, IHC: 1/50 - 1/100. Optimal dilutions/concentrations should be determined by the end user.

Immunogen: Recombinant full length protein of human CDK6.

Purification: The antibody was purified by immunogen affinity chromatography.

Form: Liquid

Isotype: IgG

Specificity: Recognizes endogenous levels of CDK6 protein.

Abbexa Ltd, Innovation Centre, Cambridge Science Park, Cambridge, CB4 0EY, UK
Telephone: +44 (0) 1223 755950 - Fax: +44 (0) 1223 755951 - E-Mail: info@abbexa.com

Storage: Shipped at 4°C. Aliquot and store at -20°C for one year. Avoid freeze/thaw cycles.

Swiss Prot: [Q00534](#)

GeneID: [1021 12571](#)

Gene Symbol: CDK6

Buffer: 0.42% Potassium phosphate, 0.87% Sodium chloride, pH 7.3, 30% glycerol, and 0.01% sodium azide.

Note: This product is for research use only.