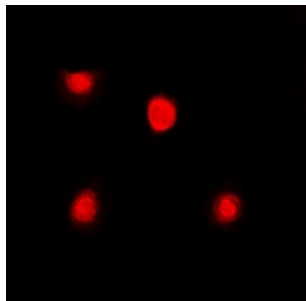


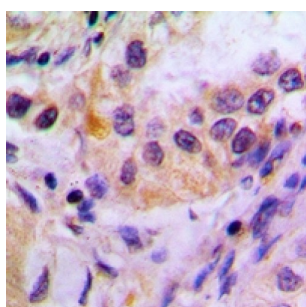
Abbexa Ltd, Innovation Centre, Cambridge Science Park, Cambridge, CB4 0EY, UK  
Telephone: +44 (0) 1223 755950 - Fax: +44 (0) 1223 755951 - E-Mail: [info@abbexa.com](mailto:info@abbexa.com)

## FK506 Binding Protein 4 (FKBP4) Antibody

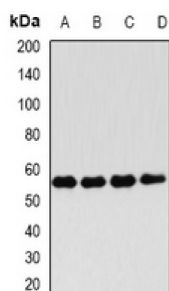
Catalogue No.: abx225174



Immunofluorescent analysis of FKBP4 staining in Jurkat cells. Formalin-fixed cells were permeabilized with 0.1% Triton X-100 in TBS for 5-10 minutes and blocked with 3% BSA-PBS for 30 minutes at room temperature. Cells were probed with the primary antibody in 3% BSA-PBS and incubated overnight at 4 °C in a humidified chamber. Cells were washed with PBST and incubated with a DyLight 594-conjugated secondary antibody (red) in PBS at room temperature in the dark.



Immunohistochemical analysis of FKBP4 staining in human lung cancer formalin fixed paraffin embedded tissue section. The section was pre-treated using heat mediated antigen retrieval with sodium citrate buffer (pH 6.0). The section was then incubated with the antibody at room temperature and detected using an HRP conjugated compact polymer system. DAB was used as the chromogen. The section was then counterstained with haematoxylin and mounted with DPX.



Western blot analysis of FKBP4 expression in Hela (A), Jurkat (B), MCF7 (C), mouse testis (D) whole cell lysates.

FKBP4 Antibody is a Rabbit Polyclonal against FKBP4.

**Target:** FKBP4

**Reactivity:** Human, Mouse, Rat

**Host:** Rabbit

**Clonality:** Polyclonal

**Tested Applications:** WB, IHC, IF/ICC

**Recommended dilutions:** WB: 1/500 - 1/2000, IHC: 1/50 - 1/200, IF/ICC: 1/50 - 1/200. Optimal dilutions/concentrations should be determined by the end user.

**Immunogen:** Recombinant full length protein of human FKBP4.

Abbexa Ltd, Innovation Centre, Cambridge Science Park, Cambridge, CB4 0EY, UK  
Telephone: +44 (0) 1223 755950 - Fax: +44 (0) 1223 755951 - E-Mail: [info@abbexa.com](mailto:info@abbexa.com)

<b>Purification:</b>	The antibody was purified by immunogen affinity chromatography.
<b>Form:</b>	Liquid
<b>Isotype:</b>	IgG
<b>Specificity:</b>	Recognizes endogenous levels of FKBP4 protein.
<b>Storage:</b>	Shipped at 4°C. Aliquot and store at -20°C for one year. Avoid freeze/thaw cycles.
<b>Swiss Prot:</b>	<a href="#"><u>Q02790</u></a>
<b>GeneID:</b>	<a href="#"><u>2288</u></a> <a href="#"><u>14228</u></a> <a href="#"><u>260321</u></a>
<b>Gene Symbol:</b>	FKBP4
<b>Buffer:</b>	0.42% Potassium phosphate, 0.87% Sodium chloride, pH 7.3, 30% glycerol, and 0.01% sodium azide.
<b>Note:</b>	This product is for research use only.