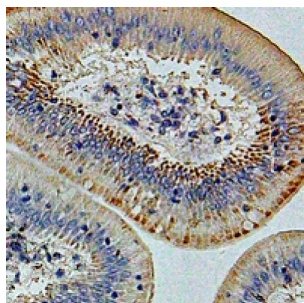


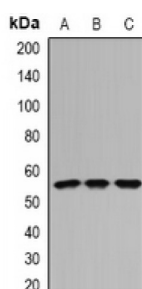
Abbexa Ltd, Innovation Centre, Cambridge Science Park, Cambridge, CB4 0EY, UK
Telephone: +44 (0) 1223 755950 - Fax: +44 (0) 1223 755951 - E-Mail: info@abbexa.com

Interferon Induced Protein 44 (IFI44) Antibody

Catalogue No.: abx225230



Immunohistochemical analysis of IFI44 staining in human colon cancer formalin fixed paraffin embedded tissue section. The section was pre-treated using heat mediated antigen retrieval with sodium citrate buffer (pH 6.0). The section was then incubated with the antibody at room temperature and detected using an HRP conjugated compact polymer system. DAB was used as the chromogen. The section was then counterstained with haematoxylin and mounted with DPX.



Western blot analysis of IFI44 expression in Hela (A), mouse kidney (B), rat kidney (C) whole cell lysates.

IFI44 Antibody is a Rabbit Polyclonal against IFI44.

Target: IFI44

Reactivity: Human, Mouse, Rat

Host: Rabbit

Clonality: Polyclonal

Tested Applications: WB, IHC

Recommended dilutions: WB: 1/500 - 1/2000, IHC: 1/100 - 1/200. Optimal dilutions/concentrations should be determined by the end user.

Immunogen: Recombinant full length protein of human IFI44.

Purification: The antibody was purified by immunogen affinity chromatography.

Form: Liquid

Isotype: IgG

Specificity: Recognizes endogenous levels of IFI44 protein.

Abbexa Ltd, Innovation Centre, Cambridge Science Park, Cambridge, CB4 0EY, UK
Telephone: +44 (0) 1223 755950 - Fax: +44 (0) 1223 755951 - E-Mail: info@abbexa.com

Storage:	Shipped at 4°C. Aliquot and store at -20°C for one year. Avoid freeze/thaw cycles.
Swiss Prot:	<u>Q8TCB0</u>
GeneID:	<u>10561</u> <u>99899</u>
Gene Symbol:	IFI44
Buffer:	0.42% Potassium phosphate, 0.87% Sodium chloride, pH 7.3, 30% glycerol, and 0.01% sodium azide.
Note:	This product is for research use only.