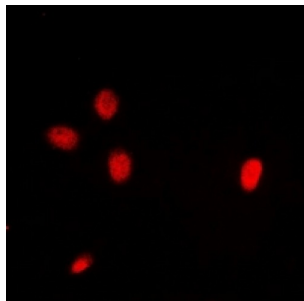


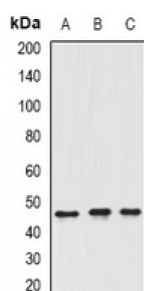
Abbexa Ltd, Innovation Centre, Cambridge Science Park, Cambridge, CB4 0EY, UK
Telephone: +44 (0) 1223 755950 - Fax: +44 (0) 1223 755951 - E-Mail: info@abbexa.com

Inhibitor of Growth Protein 3 (ING3) Antibody

Catalogue No.: abx225249



Immunofluorescent analysis of ING3 staining in HeLa cells. Formalin-fixed cells were permeabilized with 0.1% Triton X-100 in TBS for 5-10 minutes and blocked with 3% BSA-PBS for 30 minutes at room temperature. Cells were probed with the primary antibody in 3% BSA-PBS and incubated overnight at 4 °C in a humidified chamber. Cells were washed with PBST and incubated with a DyLight 594-conjugated secondary antibody (red) in PBS at room temperature in the dark.



Western blot analysis of ING3 expression in SW620 (A), HeLa (B), rat testis (C) whole cell lysates.

ING3 Antibody is a Rabbit Polyclonal against ING3.

Target: ING3

Reactivity: Human, Mouse, Rat

Host: Rabbit

Clonality: Polyclonal

Tested Applications: WB, IF/ICC, IP

Recommended dilutions: WB: 1/500 - 1/2000, IF/ICC: 1/50 - 1/200, IP 1/50 - 1/100. Optimal dilutions/concentrations should be determined by the end user.

Immunogen: Recombinant full length protein of human ING3.

Purification: The antibody was purified by immunogen affinity chromatography.

Form: Liquid

Isotype: IgG

Specificity: Recognizes endogenous levels of ING3 protein.

Abbexa Ltd, Innovation Centre, Cambridge Science Park, Cambridge, CB4 0EY, UK
Telephone: +44 (0) 1223 755950 - Fax: +44 (0) 1223 755951 - E-Mail: info@abbexa.com

Storage:	Shipped at 4°C. Aliquot and store at -20°C for one year. Avoid freeze/thaw cycles.
Swiss Prot:	<u>Q9NXR8</u>
GeneID:	<u>54556 71777 312154</u>
Gene Symbol:	ING3
Buffer:	0.42% Potassium phosphate, 0.87% Sodium chloride, pH 7.3, 30% glycerol, and 0.01% sodium azide.
Note:	This product is for research use only.