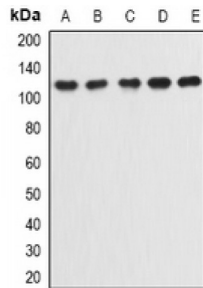


Abbexa Ltd, Innovation Centre, Cambridge Science Park, Cambridge, CB4 0EY, UK  
Telephone: +44 (0) 1223 755950 - Fax: +44 (0) 1223 755951 - E-Mail: [info@abbexa.com](mailto:info@abbexa.com)

## Integrin Alpha 9 (ITGA9) Antibody

Catalogue No.: abx225254



Western blot analysis of Integrin alpha 9 expression in A673 (A), A549 (B), NIH3T3 (C), mouse lung (D), mouse testis (E) whole cell lysates.

Integrin alpha 9 Antibody is a Rabbit Polyclonal against Integrin alpha 9.

**Target:** Integrin alpha 9

**Reactivity:** Human

**Host:** Rabbit

**Clonality:** Polyclonal

**Tested Applications:** WB

**Recommended dilutions:** WB: 1/500 - 1/2000. Optimal dilutions/concentrations should be determined by the end user.

**Immunogen:** Recombinant full length protein of human Integrin alpha 9.

**Purification:** The antibody was purified by immunogen affinity chromatography.

**Form:** Liquid

**Isotype:** IgG

**Specificity:** Recognizes endogenous levels of Integrin alpha 9 protein.

**Storage:** Shipped at 4°C. Aliquot and store at -20°C for one year. Avoid freeze/thaw cycles.

**Swiss Prot:** [Q13797](#)

**GeneID:** [3680](#)

**Gene Symbol:** ITGA9

Abbexa Ltd, Innovation Centre, Cambridge Science Park, Cambridge, CB4 0EY, UK  
Telephone: +44 (0) 1223 755950 - Fax: +44 (0) 1223 755951 - E-Mail: [info@abbexa.com](mailto:info@abbexa.com)

**Buffer:** 0.42% Potassium phosphate, 0.87% Sodium chloride, pH 7.3, 30% glycerol, and 0.01% sodium azide.

**Note:** This product is for research use only.