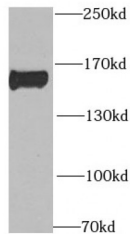


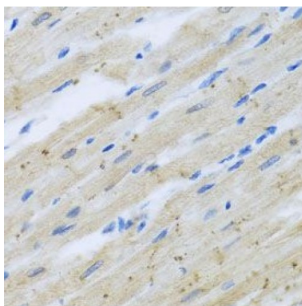
Abbexa Ltd, Innovation Centre, Cambridge Science Park, Cambridge, CB4 0EY, UK
Telephone: +44 (0) 1223 755950 - Fax: +44 (0) 1223 755951 - E-Mail: info@abbexa.com

CAP-Gly Domain Containing Linker Protein 1 (CLIP1) Antibody

Catalogue No.: abx231763



WB analysis of mouse brain tissue, using CLIP1 Antibody (1/1000 dilution).



IHC analysis of paraffin-embedded rat heart, using CLIP1 Antibody (1/100 dilution).

CLIP1 Antibody is a Rabbit Polyclonal against CLIP1.

| | |
|-------------------------------|---|
| Target: | CLIP1 |
| Reactivity: | Human, Mouse, Rat |
| Host: | Rabbit |
| Clonality: | Polyclonal |
| Tested Applications: | ELISA, WB, IHC |
| Recommended dilutions: | WB: 1/500 - 1/2000, IHC: 1/50 - 1/200. Optimal dilutions/concentrations should be determined by the end user. |
| Immunogen: | CAP-GLY domain containing linker protein 1 |
| Purity: | > 95% (SDS-PAGE) |
| Purification: | Immunogen affinity purified. |
| Form: | Liquid |
| Isotype: | IgG |

Abbexa Ltd, Innovation Centre, Cambridge Science Park, Cambridge, CB4 0EY, UK
Telephone: +44 (0) 1223 755950 - Fax: +44 (0) 1223 755951 - E-Mail: info@abbexa.com

Conjugation: Unconjugated

Storage: Store at -20°C for 24 months. Avoid repeated freeze/thaw cycles.

Molecular Weight: 162 kDa

Swiss Prot: [P30622](#)

Buffer: PBS, pH 7.3, with 0.02% sodium azide and 50% glycerol.

Note: This product is for research use only.