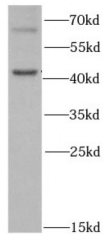
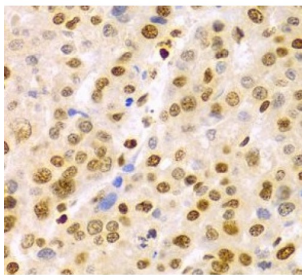


H/ACA Ribonucleoprotein Complex Subunit DKC1 (DKC1) Antibody

Catalogue No.: abx232400



WB analysis of mouse testis tissue, using DKC1 antibody (1/1000 dilution).



IHC analysis of paraffin-embedded human liver cancer, using DKC1 Antibody (1/100 dilution).

DKC1 Antibody is a Rabbit Polyclonal against DKC1.

Target: DKC1**Reactivity:** Human, Mouse, Rat**Host:** Rabbit**Clonality:** Polyclonal**Tested Applications:** ELISA, WB, IHC, IF/ICC**Recommended dilutions:** WB: 1/500 - 1/2000, IHC: 1/50 - 1/200, IF/ICC: 1/50 - 1/200. Optimal dilutions/concentrations should be determined by the end user.**Immunogen:** dyskeratosis congenita 1, dyskerin**Purity:** > 95% (SDS-PAGE)**Purification:** Immunogen affinity purified.**Form:** Liquid**Isotype:** IgG

Abbexa Ltd, Innovation Centre, Cambridge Science Park, Cambridge, CB4 0EY, UK
Telephone: +44 (0) 1223 755950 - Fax: +44 (0) 1223 755951 - E-Mail: info@abbexa.com

Conjugation: Unconjugated

Storage: Store at -20°C for 24 months. Avoid repeated freeze/thaw cycles.

Molecular Weight: 43 kDa

Swiss Prot: [O60832](#)

Buffer: PBS, pH 7.3, with 0.02% sodium azide and 50% glycerol.

Note: This product is for research use only.