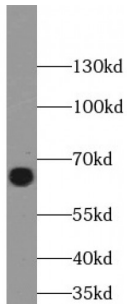


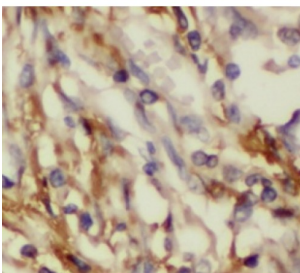
Abbexa Ltd, Innovation Centre, Cambridge Science Park, Cambridge, CB4 0EY, UK
Telephone: +44 (0) 1223 755950 - Fax: +44 (0) 1223 755951 - E-Mail: info@abbexa.com

Glucose 6 Phosphate Isomerase (GPI) Antibody

Catalogue No.: abx233582



WB analysis of PC-3 cells, using GPI antibody (1/1000 dilution).



IHC analysis of paraffin-embedded rat kidney, using GPI Antibody (1/200 dilution).

GPI Antibody is a Rabbit Polyclonal against GPI.

Target:	GPI
Reactivity:	Human, Mouse, Rat
Host:	Rabbit
Clonality:	Polyclonal
Tested Applications:	ELISA, WB, IHC, IF/ICC
Recommended dilutions:	WB: 1/500 - 1/2000, IHC: 1/50 - 1/200, IF/ICC: 1/50 - 1/200. Optimal dilutions/concentrations should be determined by the end user.
Immunogen:	glucose phosphate isomerase
Purity:	> 95% (SDS-PAGE)
Purification:	Immunogen affinity purified.
Form:	Liquid
Isotype:	IgG

Abbexa Ltd, Innovation Centre, Cambridge Science Park, Cambridge, CB4 0EY, UK
Telephone: +44 (0) 1223 755950 - Fax: +44 (0) 1223 755951 - E-Mail: info@abbexa.com

Conjugation: Unconjugated

Storage: Store at -20°C for 24 months. Avoid repeated freeze/thaw cycles.

Molecular Weight: 56 kDa

Swiss Prot: [P06744](#)

Buffer: PBS, pH 7.3, with 0.02% sodium azide and 50% glycerol.

Note: This product is for research use only.