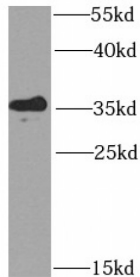


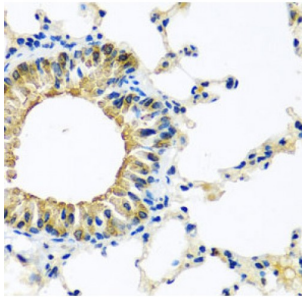
Abbexa Ltd, Innovation Centre, Cambridge Science Park, Cambridge, CB4 0EY, UK
Telephone: +44 (0) 1223 755950 - Fax: +44 (0) 1223 755951 - E-Mail: info@abbexa.com

Potassium Channel Tetramerization Domain Containing 15 (KCTD15) Antibody

Catalogue No.: abx234505



WB analysis of mouse liver tissue, using KCTD15 antibody (1/1000 dilution).



IHC analysis of paraffin-embedded mouse lung, using KCTD15 antibody (1/100 dilution).

KCTD15 Antibody is a Rabbit Polyclonal against KCTD15.

Target: KCTD15

Reactivity: Human, Mouse, Rat

Host: Rabbit

Clonality: Polyclonal

Tested Applications: ELISA, WB, IHC

Recommended dilutions: WB: 1/500 - 1/2000, IHC: 1/50 - 1/100. Optimal dilutions/concentrations should be determined by the end user.

Immunogen: potassium channel tetramerisation domain containing 15

Purity: > 95% (SDS-PAGE)

Purification: Immunogen affinity purified.

Form: Liquid

Abbexa Ltd, Innovation Centre, Cambridge Science Park, Cambridge, CB4 0EY, UK
Telephone: +44 (0) 1223 755950 - Fax: +44 (0) 1223 755951 - E-Mail: info@abbexa.com

Isotype: IgG

Conjugation: Unconjugated

Storage: Store at -20°C for 24 months. Avoid repeated freeze/thaw cycles.

Molecular Weight: 32 kDa

Swiss Prot: [Q96S11](#)

Buffer: PBS, pH 7.3, with 0.02% sodium azide and 50% glycerol.

Note: This product is for research use only.