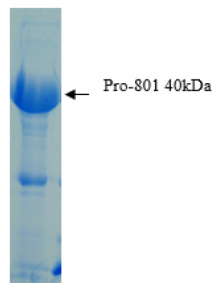


Abbexa Ltd, Innovation Centre, Cambridge Science Park, Cambridge, CB4 0EY, UK  
Telephone: +44 (0) 1223 755950 - Fax: +44 (0) 1223 755951 - E-Mail: [info@abbexa.com](mailto:info@abbexa.com)

## Mycoplasma Pneumoniae P1-C Protein

Catalogue No.: abx260308



M.Pneumoniae is a recombinant protein. The Recombinant Mycoplasma Pneumoniae C-terminal region (P1C) of the P1 protein was expressed in E. coli containing 362 amino acids. The protein is fused to a 6 His Tag. This peptide can be used as an antigen in the diagnosis of M. pneumoniae infection.

<b>Target:</b>	M.Pneumoniae
<b>Host:</b>	E. coli
<b>Tested Applications:</b>	ELISA, LF
<b>Purity:</b>	> 95%
<b>Form:</b>	Sterile filtered colorless solution.
<b>Conjugation:</b>	Unconjugated
<b>Storage:</b>	Store at -20 °C. Avoid repeated freeze/thaw cycles.
<b>Expression:</b>	Recombinant
<b>Buffer:</b>	PBS pH 7.4.
<b>Note:</b>	This product is for research use only.