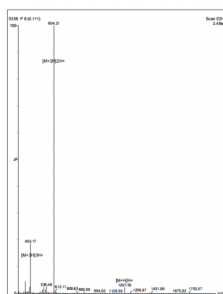


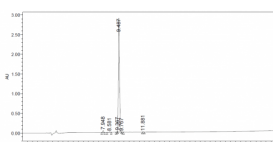
Abbexa Ltd, Innovation Centre, Cambridge Science Park, Cambridge, CB4 0EY, UK  
Telephone: +44 (0) 1223 755950 - Fax: +44 (0) 1223 755951 - E-Mail: [info@abbexa.com](mailto:info@abbexa.com)

**alpha Melanocyte Stimulating Hormone [Met5, Pro6, D-Phe7, D-Trp9, Phe10] (5-13) (MSHa) Peptide**

Catalogue No.:abx266307



Positive ESI-MS analysis of MSHa (5-13).



Reverse-phase HPLC analysis of MSHa (5-13). This was performed using a Kromasil 100-5C18 column (4.6 mm x 150 mm, 5  $\mu$ m particle size). UV absorbance was measured at 220 nm. Mobile phase A was acetonitrile with 0.1% trifluoroacetic acid (TFA) and mobile phase B was water with 0.1% TFA. Mobile phase A was increased from 20% to 70% over a period of 25 minutes.

	RT	Area	% Area	Height
1	7.948	254885	0.97	48405
2	8.581	89078	0.28	11756
3	9.397	105124	0.40	27583
4	9.487	25879022	98.16	2923337
5	9.767	22840	0.09	4783
6	11.661	31063	0.12	4007

$\alpha$ -Melanocyte Stimulating Hormone [Met5, Pro6, D-Phe7, D-Trp9, Phe10] (5-13) (MSHa) is a peptide.

**Target:** alpha Melanocyte Stimulating Hormone [Met5, Pro6, D-Phe7, D-Trp9, Phe10] (5-13) (MSHa)

**Purity:** 98.16% (RP-HPLC)

**Form:** Lyophilized

**Conjugation:** Unconjugated

**Storage:** Store at -20°C for up to one year. Keep dry.

**Molecular Weight:** 1206.53

**Molecular Formula:** C<sub>61</sub>H<sub>87</sub>N<sub>15</sub>O<sub>9</sub>S

**Sequence:** Met-Pro-D-Phe-Arg-D-Trp-Phe-Lys-Pro-Val-NH<sub>2</sub>

**Note:** This product is for research use only.