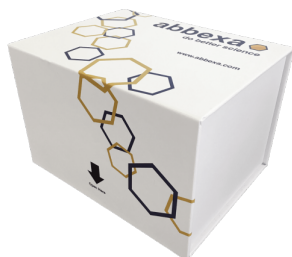


Abbexa Ltd, Innovation Centre, Cambridge Science Park, Cambridge, CB4 0EY, UK
Telephone: +44 (0) 1223 755950 - Fax: +44 (0) 1223 755951 - E-Mail: info@abbexa.com

Human Tensin-1 (TNS1) ELISA Kit

Catalogue No.: abx383857



Human TNS1 ELISA Kit is an ELISA Kit against TNS1.

Target: TNS1

Reactivity: Human

Tested Applications: ELISA

Recommended dilutions: Optimal dilutions/concentrations should be determined by the end user.

Test Range: 0.313 ng/ml - 20 ng/ml

Sensitivity: < 0.188 ng/ml

Validity: The validity for this kit is 6 months.

Storage: Store at 4 °C upon receipt.

Stability: The stability of the kit is determined by the rate of activity loss. The loss rate is less than 5% within the expiration date under appropriate storage conditions. To minimize performance fluctuations, operation procedures and lab conditions should be strictly controlled. It is also strongly suggested that the whole assay is performed by the same user throughout.

Swiss Prot: [Q9HBL0](#)

GeneID: [7145](#)

Gene Symbol: TNS1

OMIM: [600076](#)

HGNC: 11973

Abbexa Ltd, Innovation Centre, Cambridge Science Park, Cambridge, CB4 0EY, UK
Telephone: +44 (0) 1223 755950 - Fax: +44 (0) 1223 755951 - E-Mail: info@abbexa.com

Ensembl: ENSG00000079308

Standard Form: Lyophilized

ELISA Detection: Colorimetric

ELISA Type: Sandwich

ELISA Data: Quantitative

Sample Type: Serum, plasma and other biological fluids.

Note: This product is for research use only.
The range and sensitivity is subject to change. Please contact us for the latest product information.
For accurate results, sample concentrations must be diluted to mid-range of the kit. If you require a specific range, please contact us in advance or write your request in your order comments.
Please note that our ELISA and CLIA kits are optimised for detection of native samples, rather than recombinant proteins. We are unable to guarantee detection of recombinant proteins, as they may have different sequences or tertiary structures to the native protein.