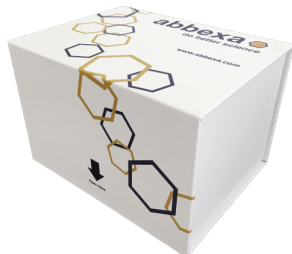


Abbexa Ltd, Innovation Centre, Cambridge Science Park, Cambridge, CB4 0EY, UK  
Telephone: +44 (0) 1223 755950 - Fax: +44 (0) 1223 755951 - E-Mail: [info@abbexa.com](mailto:info@abbexa.com)

## Chondroitin Sulfate (CS) CLIA Kit

Catalogue No.: abx490624



Chondroitin Sulfate (CS) CLIA Kit is a Competitive CLIA Kit for use with Serum, plasma, tissue homogenates, cell lysates, cell culture supernates and other biological fluids.

Please note that this kit is also available as an ELISA Kit [abx258808](#).

**Target:** Chondroitin Sulfate (CS)

**Reactivity:** General

**Tested Applications:** CLIA

**Recommended dilutions:** Optimal dilutions/concentrations should be determined by the end user.

**Test Range:** 39.06 pg/ml - 10000 pg/ml

**Sensitivity:** < 15.17 pg/ml

**Validity:** The validity for this kit is 6 months.

**Storage:** Store at 2°C to 8°C upon receipt.

**Stability:** The stability of the kit is determined by the rate of activity loss. The loss rate is less than 5% within the expiration date under appropriate storage conditions. To minimize performance fluctuations, operation procedures and lab conditions should be strictly controlled. It is also strongly suggested that the whole assay is performed by the same user throughout.

**Standard Form:** Lyophilized

**ELISA Detection:** Fluorometric

**ELISA Type:** Competitive

Abbexa Ltd, Innovation Centre, Cambridge Science Park, Cambridge, CB4 0EY, UK  
Telephone: +44 (0) 1223 755950 - Fax: +44 (0) 1223 755951 - E-Mail: [info@abbexa.com](mailto:info@abbexa.com)

**ELISA Data:** Quantitative

**Sample Type:** Serum, plasma, tissue homogenates, cell lysates, cell culture supernatants and other biological fluids.

**Note:** This product is for research use only.  
The range and sensitivity is subject to change. Please contact us for the latest product information.  
For accurate results, sample concentrations must be diluted to mid-range of the kit. If you require a specific range, please contact us in advance or write your request in your order comments.  
Please note that our ELISA and CLIA kits are optimised for detection of native samples, rather than recombinant proteins. We are unable to guarantee detection of recombinant proteins, as they may have different sequences or tertiary structures to the native protein.