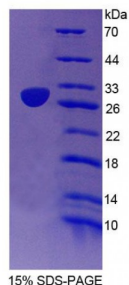


Mouse Elastin Microfibril Interface Located Protein 2 (EMILIN2) Protein

Catalogue No.: abx650754



SDS-PAGE analysis of Mouse EMILIN2 Protein.

Mouse EMILIN2 Protein (Recombinant) is a recombinant protein from Mouse. It is produced in E. coli using Prokaryotic expression.

This protein is the immunogen for the following antibodies: [abx131040](#)

Target: Elastin Microfibril Interface Located Protein 2 (EMILIN2)

Origin: Mouse

Host: E. coli

Tested Applications: ELISA, WB, IP, SDS-PAGE

Purity: ≥ 99%

Form: Lyophilized

Conjugation: Unconjugated

Storage: Store at 2-8 °C for up to one month. Store at -80 °C for up to one year. Avoid repeated freeze/thaw cycles.

Expression: Recombinant

Molecular Weight: 27.0 kDa

Swiss Prot: [Q8K482](#)

Sequence Fragment: Arg853-Leu1074

Tag: Two N-terminal tags, His-tag and T7-tag

Abbexa Ltd, Innovation Centre, Cambridge Science Park, Cambridge, CB4 0EY, UK
Telephone: +44 (0) 1223 755950 - Fax: +44 (0) 1223 755951 - E-Mail: info@abbexa.com

Activity: Not tested

Concentration: Prior to lyophilization: 200 µg/ml

Buffer: Prior to lyophilization: PBS, pH 7.4, containing 0.01% Sarcosyl, 1 mM DTT, 5% Trehalose and Proclin-300.

Note: This product is for research use only.