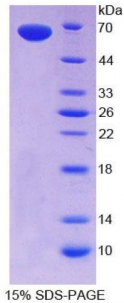


Human C-Type Lectin Domain Family 11, Member A (CLEC11A) Protein

Catalogue No.: abx650817



SDS-PAGE analysis of Human CLEC11A Protein.

Human CLEC11A Protein (Recombinant) is a recombinant protein from Human. It is produced in *E. coli* using Prokaryotic expression.

| | |
|-----------------------------|---|
| Target: | C-Type Lectin Domain Family 11, Member A (CLEC11A) |
| Origin: | Human |
| Host: | <i>E. coli</i> |
| Tested Applications: | ELISA, WB, IP, SDS-PAGE |
| Purity: | ≥ 98% |
| Form: | Lyophilized |
| Conjugation: | Unconjugated |
| Storage: | Store at 2-8 °C for up to one month. Store at -80 °C for up to one year. Avoid repeated freeze/thaw cycles. |
| Expression: | Recombinant |
| Molecular Weight: | 63.5 kDa |
| Swiss Prot: | Q9Y240 |
| Sequence Fragment: | Ala22-Phe323 |
| Tag: | Two N-terminal tags, His-tag and GST-tag |
| Activity: | Not tested |
| Concentration: | Prior to lyophilization: 200 µg/ml |

Abbexa Ltd, Innovation Centre, Cambridge Science Park, Cambridge, CB4 0EY, UK
Telephone: +44 (0) 1223 755950 - Fax: +44 (0) 1223 755951 - E-Mail: info@abbexa.com

Buffer: Prior to lyophilization: PBS, pH 7.4, containing 0.01% Sarcosyl, 1 mM DTT, 5% Trehalose and Proclin-300.

Note: This product is for research use only.