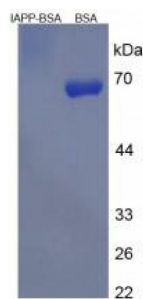


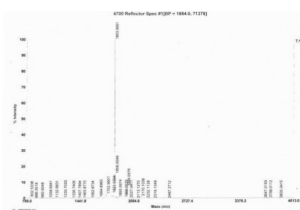
Abbexa Ltd, Innovation Centre, Cambridge Science Park, Cambridge, CB4 0EY, UK
Telephone: +44 (0) 1223 755950 - Fax: +44 (0) 1223 755951 - E-Mail: info@abbexa.com

Rat Islet Amyloid Polypeptide (IAPP) Peptide (BSA)

Catalogue No.: abx651117



SDS-PAGE analysis of Islet Amyloid Polypeptide Protein (BSA).



MS analysis of Islet Amyloid Polypeptide Protein (BSA).

Islet Amyloid Polypeptide Protein (BSA) is a Rat protein conjugated to BSA.

Target: Islet Amyloid Polypeptide

Origin: Rat

Tested Applications: ELISA

Purity: > 90%

Form: Lyophilized

Conjugation: BSA

Storage: Store at 2-8 °C for up to one month. Store at -80 °C for up to one year. Avoid repeated freeze/thaw cycles.

Concentration: Prior to lyophilization: 200 µg/ml

Buffer: Prior to lyophilization: PBS, pH 7.4.

Note: This product is for research use only.