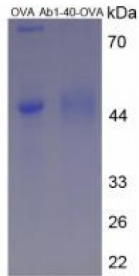


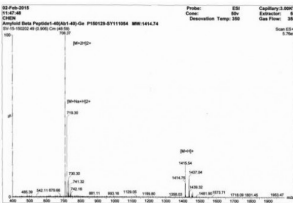
Abbexa Ltd, Innovation Centre, Cambridge Science Park, Cambridge, CB4 0EY, UK
 Telephone: +44 (0) 1223 755950 - Fax: +44 (0) 1223 755951 - E-Mail: info@abbexa.com

Mouse Amyloid beta Peptide 1-40 (Ab1-40) Peptide (OVA)

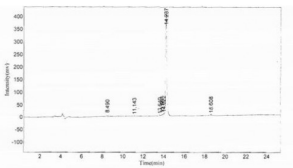
Catalogue No.: abx651147



SDS-PAGE analysis of Amyloid Beta Peptide 1-40 Protein (OVA).



MS analysis of Amyloid Beta Peptide 1-40 Protein (OVA).



HPLC analysis of Immunoglobulin G3 Protein (OVA).

Amyloid Beta Peptide 1-40 Protein (OVA) is a Mouse protein conjugated to OVA.

Target: Amyloid Beta Peptide 1-40

Origin: Mouse

Tested Applications: ELISA

Purity: > 90%

Form: Lyophilized

Conjugation: OVA

Storage: Store at 2-8 °C for up to one month. Store at -80 °C for up to one year. Avoid repeated freeze/thaw cycles.

Abbexa Ltd, Innovation Centre, Cambridge Science Park, Cambridge, CB4 0EY, UK
Telephone: +44 (0) 1223 755950 - Fax: +44 (0) 1223 755951 - E-Mail: info@abbexa.com

Activity: Not tested

Concentration: Prior to lyophilization: 200 µg/ml

Buffer: Prior to lyophilization: PBS, pH 7.4.

Note: This product is for research use only.