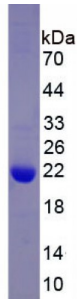
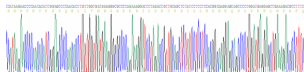


Sodium/Potassium-Transporting ATPase Subunit Alpha 1 (ATP1A1) Protein

Catalogue No.: abx652616



SDS-PAGE analysis of recombinant ATP1A1 Protein.



Gene sequencing extract of recombinant ATP1A1 Protein.

ATPase, Na⁺/K⁺ Transporting Alpha 1 Polypeptide (ATP1a1) Protein is a Recombinant Human, Mouse, Rat protein expressed in *E. coli*.

Target:	Sodium/Potassium-Transporting ATPase Subunit Alpha 1 (ATP1A1)
Origin:	Human, Mouse, Rat
Expression:	Recombinant
Tested Applications:	WB, SDS-PAGE
Host:	<i>E. coli</i>
Conjugation:	Unconjugated
Form:	Lyophilized
Purity:	> 90%
Reconstitution:	Reconstitute in ddH ₂ O to a concentration of 0.1-1.0 mg/ml. Do not vortex.
Storage:	Store at 2-8 °C for up to one month. Store at -80 °C for up to one year. Avoid repeated freeze/thaw cycles.

Datasheet

Version: 2.0.0
Revision date: 26 Oct 2021



Molecular Weight: Calculated MW: 22.0 kDa
Observed MW (SDS-PAGE): 22 kDa

Sequence Fragment: His493-Ala660

Sequence: HKNPNTSE PQHLLVMKGA PERILDRCSS ILLHGKEQPL DEELKDAFQN AYLELGGLGE
RVLGFCHLFL
PDEQFPEGFQ FDTDDVNFPI DNLCFVGLIS MIDPPRAAVP DAVGKCRSAG IKVIMVTGDH
PITAKAIAK
G VGIISEGNET VEDIAARLNI PVSQVNPDA

Tag: N-terminal His tag

Buffer: Prior to lyophilization: 100 mM NaHCO₃, 500 mM NaCl, pH 8.3, containing 0.01% Sarcosyl, 5% Trehalose.

Activity: Not tested

Concentration: Prior to lyophilization: 200 µg/ml

Note: This product is for research use only.
Not for human consumption, cosmetic, therapeutic or diagnostic use.

For Reference Only