



Bovine Serum Albumin Monoclonal Antibody

Cat #: ABM40199

Size: 30µl /100µl /200µl

Product Information

	Product Name: Bovine Serum Albumin Monoclonal Antibody		
	Applications: WB		Isotype: Mouse IgG1
	Reactivity: Cow		
REF	Catalog Number: ABM40199	LOT	Lot Number: Refer to product label
	Formulation: Liquid		Concentration: 1 mg/ml
	Storage: Store at -20°C. Avoid repeated freeze / thaw cycles.		Note: Contain sodium azide.

Background: Albumin is the most abundant protein in the circulatory system. In mammals albumin is synthesized initially as preproalbumin by the liver. After removal of the signal peptide, the resultant proalbumin is further processed by removal of the six-residue propeptide from the new N-terminus. The albumin released into circulation possesses a half-life of 19 days.

Application Notes: Optimal working dilutions should be determined experimentally by the investigator. Suggested starting dilutions are as follows: WB (1:1000-1:2000).

Storage Buffer: PBS, pH 7.4, containing 0.02% Sodium Azide as preservative and 50% Glycerol.

Storage Instructions: Stable for one year at -20°C from date of shipment. For maximum recovery of product, centrifuge the original vial after thawing and prior to removing the cap. Aliquot to avoid repeated freezing and thawing.

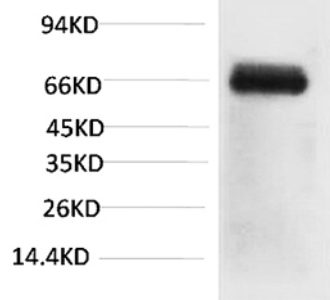


Fig. Western blot analysis of Bovine Serum Albumin using Bovine Serum Albumin Monoclonal Antibody.

Note: The product listed herein is for research use only and is not intended for use in human or clinical diagnosis. Suggested applications of our products are not recommendations to use our products in violation of any patent or as a license. We cannot be responsible for patent infringements or other violations that may occur with the use of this product.